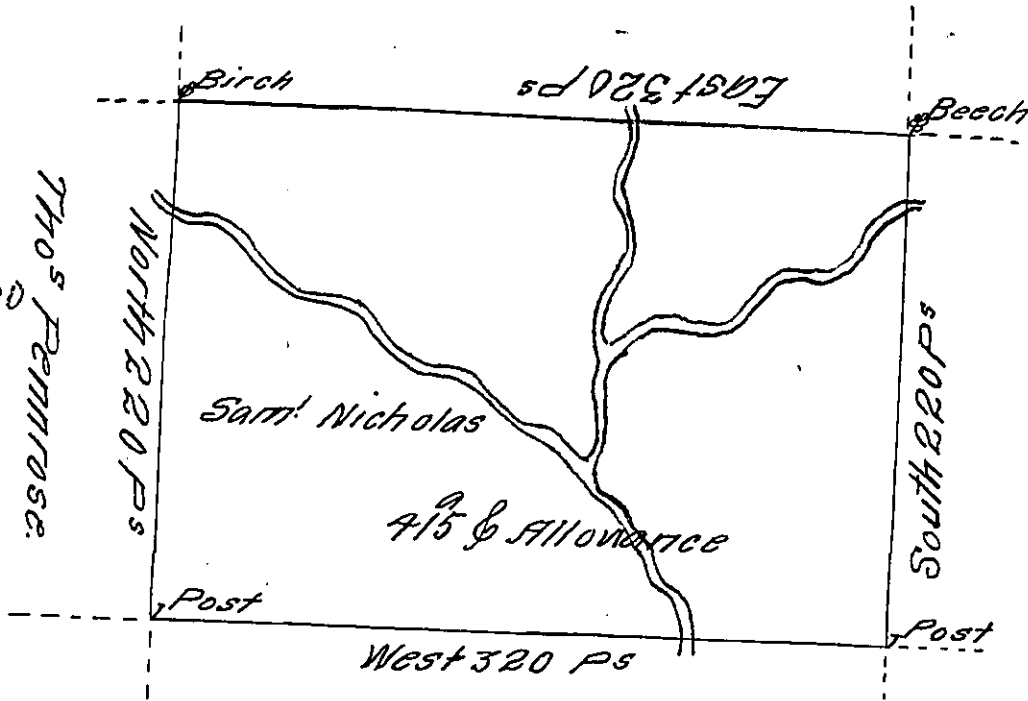


A-51-76  
Wm Sheaff

A-22-164

D-289

C-174-170  
Thos Ferriss



Mary Servis  
C-98-137

C-140

Benj<sup>a</sup> Scull  
A-51-77

D-39-165

A Draught of a tract of land Called — Situate on the Branches of  
 Choconut Creek Joining land Surv<sup>d</sup> for W<sup>m</sup> Sheaff and others in  
 Stoke Township North<sup>d</sup> County Containing four Hundred and fifteen  
 acres & allowance of Six P Cent for Roads &c Surv<sup>d</sup> for Samuel  
 Nicholas the 5<sup>th</sup> Day of August 1784 — in pursuance of a Warrant  
 Dated the 2<sup>d</sup> Day of July 1784

To John Lukens Esq<sup>r</sup> }  
 Surv<sup>r</sup> Gen<sup>l</sup>

by  
 W<sup>m</sup> Gray D.S.

IN TESTIMONY that the above is a copy of the original remaining on file in  
 the Department of Internal Affairs of Pennsylvania, made  
 conformably to an Act of Assembly approved the 16th day of  
 February, 1833, I have hereunto set my Hand and caused  
 the Seal of said Department to be affixed at Harrisburg,  
 this twentyfirst day of October 1911

Henry Fowler  
 Secretary of Internal Affairs.